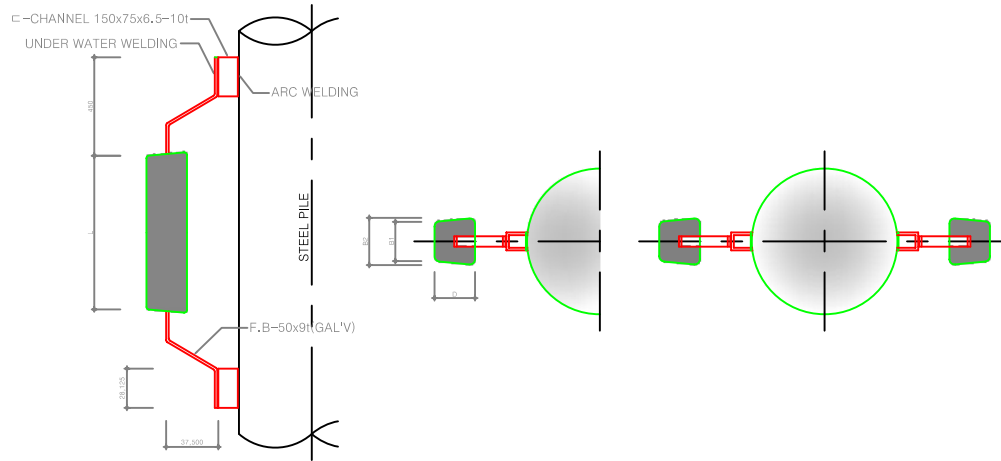
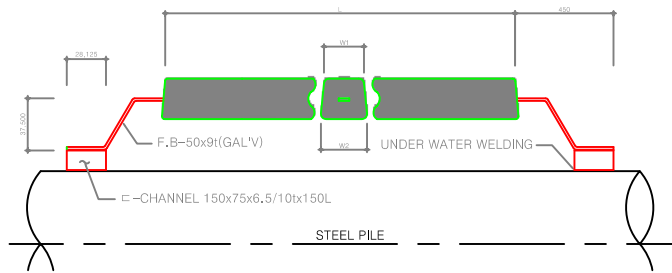


항만 알루미늄 양극 설치도

알루미늄 양극 설치

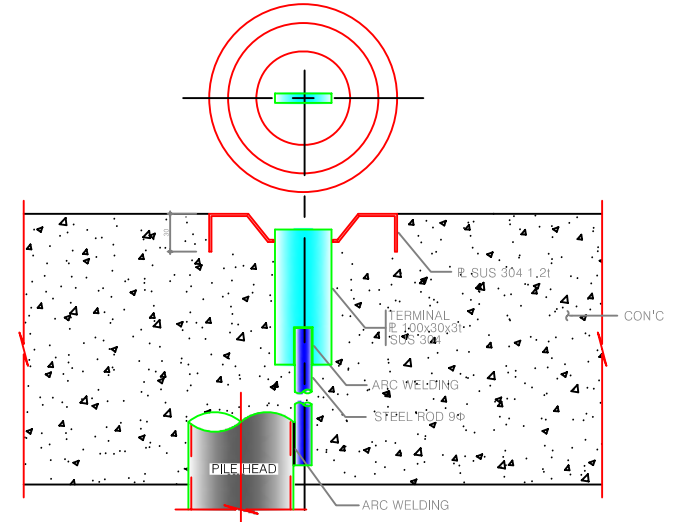


AL - ANODE DETAIL



TYPE	(W1+W2) x D x L (mm)	NOM. WEIGHT
B1	(200+235) x 230 x 300	45 Kg
B2	(190+225) x 205 x 510	64 Kg
B3	(180+220) x 190 x 765	84 Kg
B4	(170+200) x 190 x 1035	105 Kg
B5	(165+195) x 180 x 1340	125 Kg

측정 합 설치



시험편 설치

